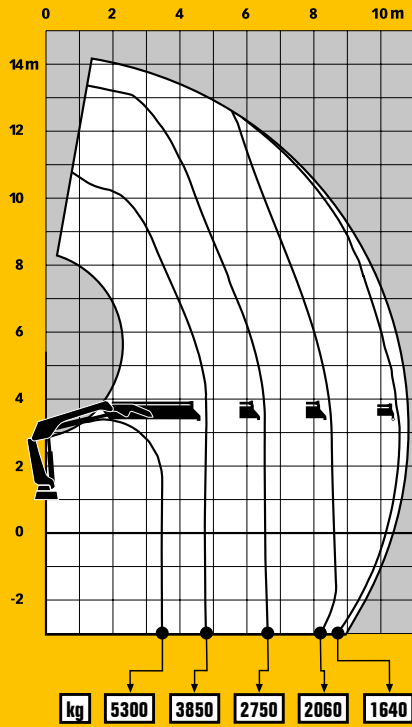




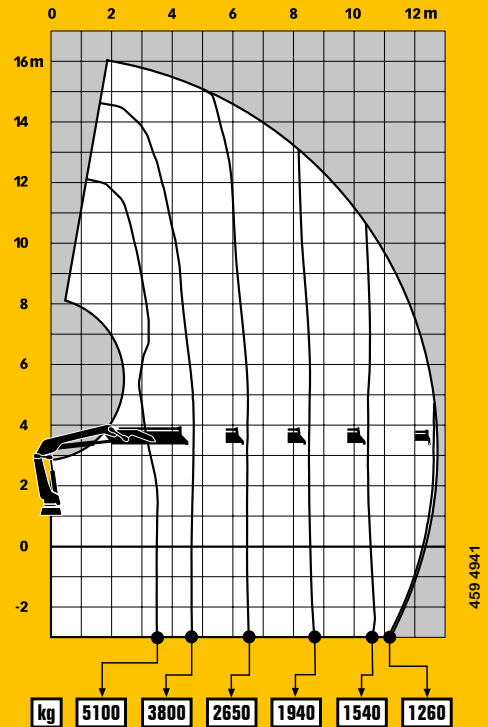
220 H



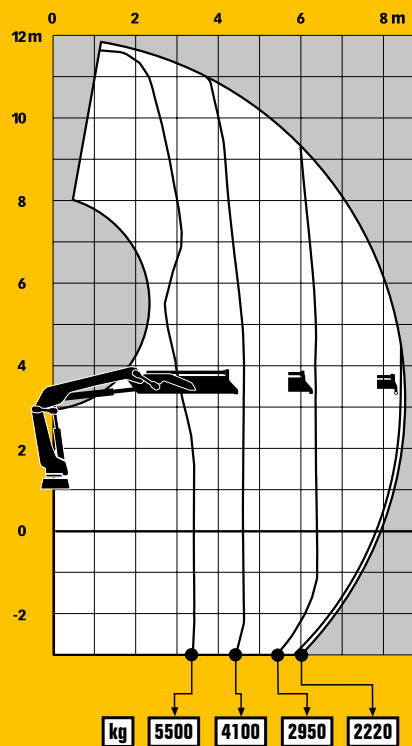
EFFER 220H B-3



EFFER 220H E-4



EFFER 220H E-2



Legenda

B: without links - **D:** links on 2nd boom
E: links on 1st and 2nd boom - **S:** short boom



The H versions are manually controlled loader cranes. Optional XS Drive (6 levers) and XS Drive Light (4 lever) remote controls are available. For non CE markets.

CRANE DESIGNED ACCORDING TO STANDARDS UNI EN 12999 HC1 S2 HD4

The configurations and figures contained in the brochure are illustrative. For information on the complete offer and for more technical details, ask your EFFER dealer or consult the website www.effer.com. The above data are subject to change. Lifting capacity is based on the maximum lifting power of the crane. The stability of the truck may require a reduction of lifting capacity.

Hiab is the world's leading provider of on-road load handling equipment, intelligent services, smart and connected solutions. Hiab's class-leading load handling equipment includes HIAB, EFFER and ARGOS loader cranes, LOGLIFT and JONSERED forestry and recycling cranes, MOFFETT and PRINCETON truck mounted forklifts, MULTILIFT skiploaders and hooklifts, and tail lifts under the ZEPRO, DEL, and WALTICO brands. As the industry pioneer and with a proud 75 year history, Hiab is committed to be the preferred partner and solution provider to its customers and shape the future of intelligent load handling. www.hiab.com
 Hiab is part of Cargotec Corporation. www.cargotec.com

EFFER S.p.A.

Via IV Novembre, 12 | 40061 Minerbio (BO) Italy
 Tel. +39 051 4181211 | contact@effer.com
www.effer.com | www.effermarine.com
 EFFER is part of HIAB

